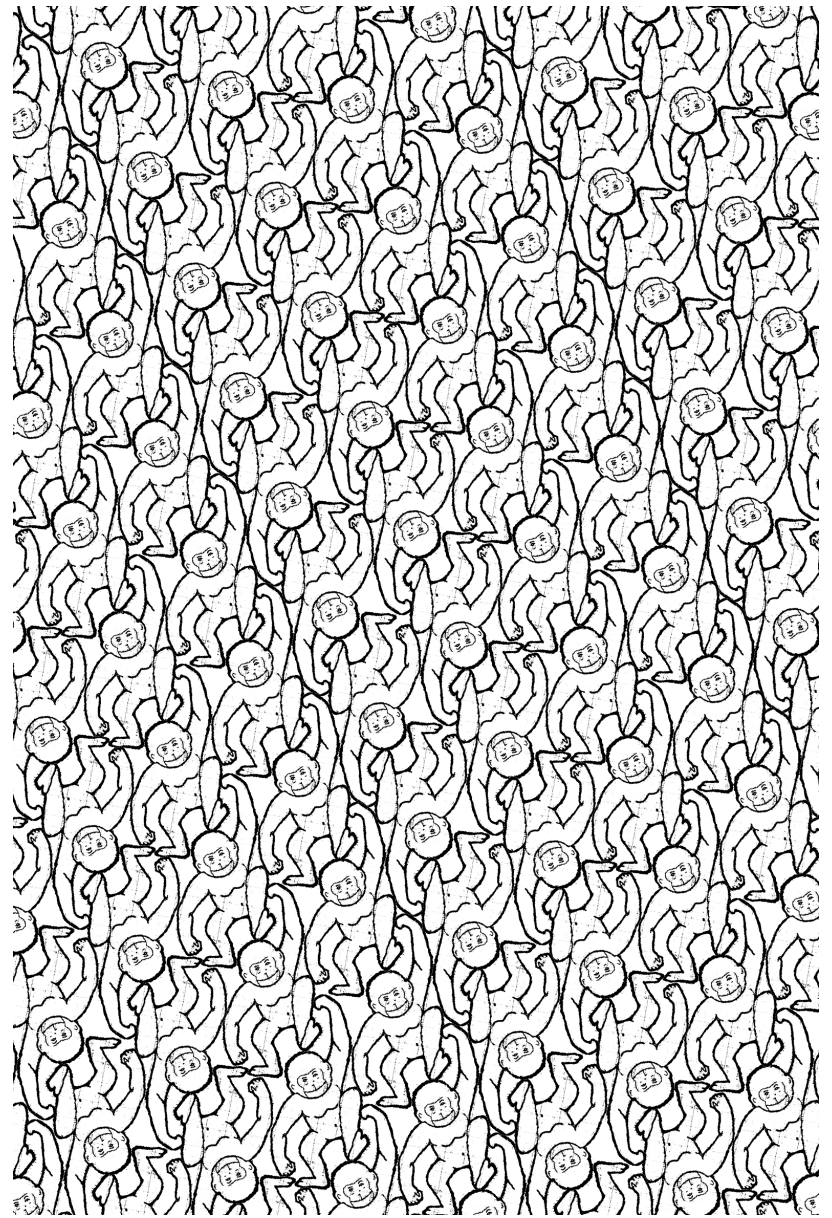
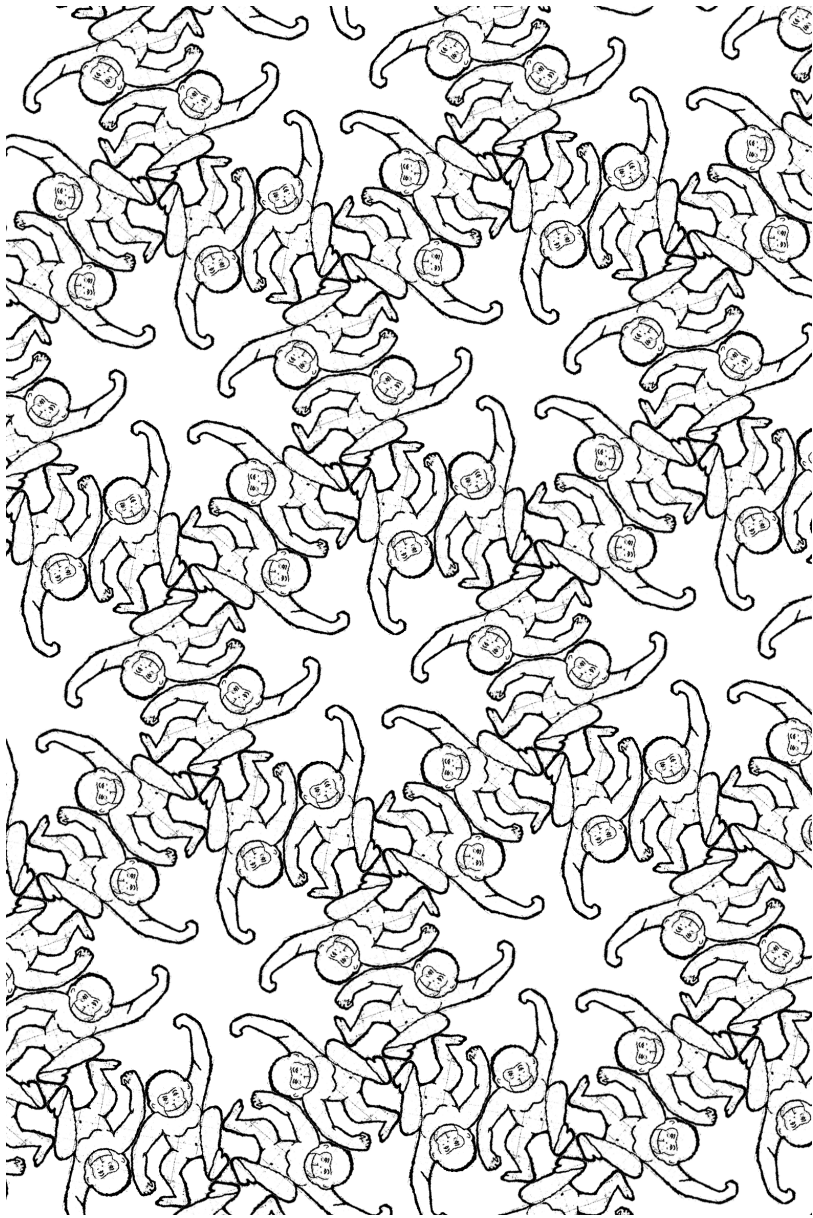
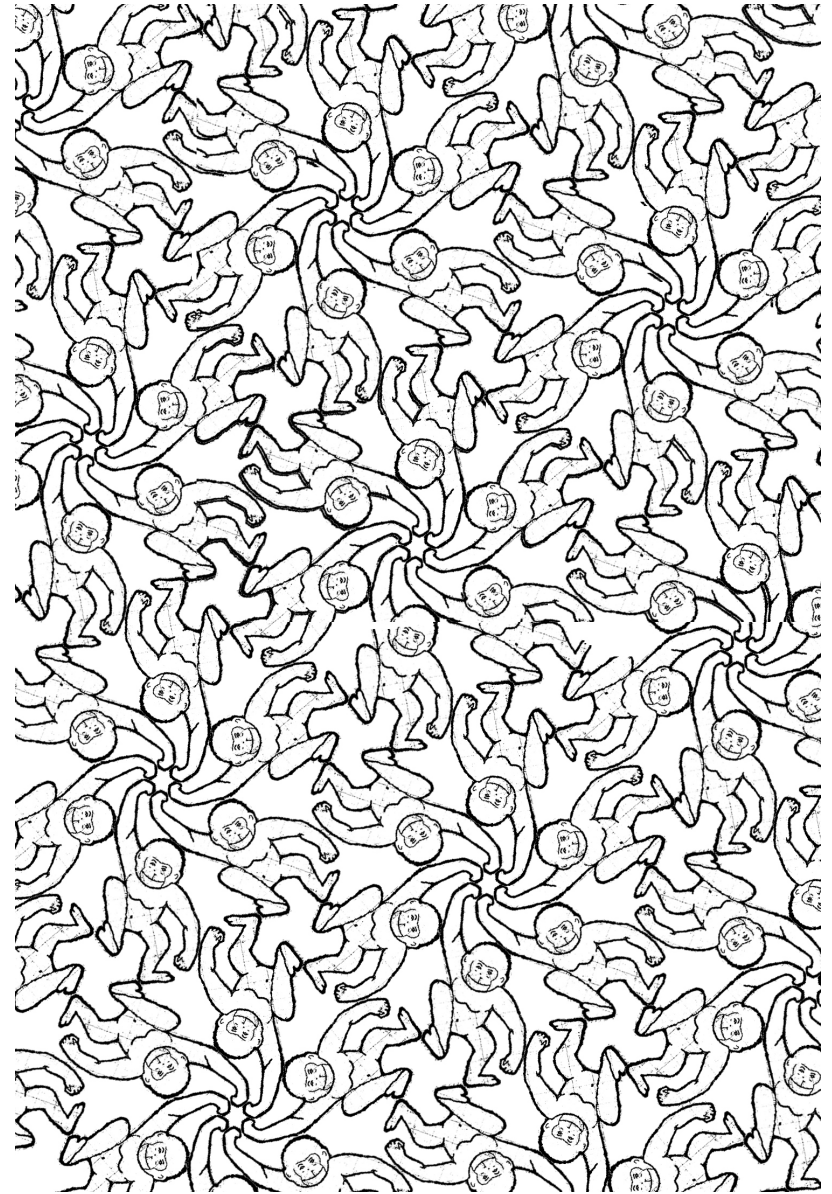
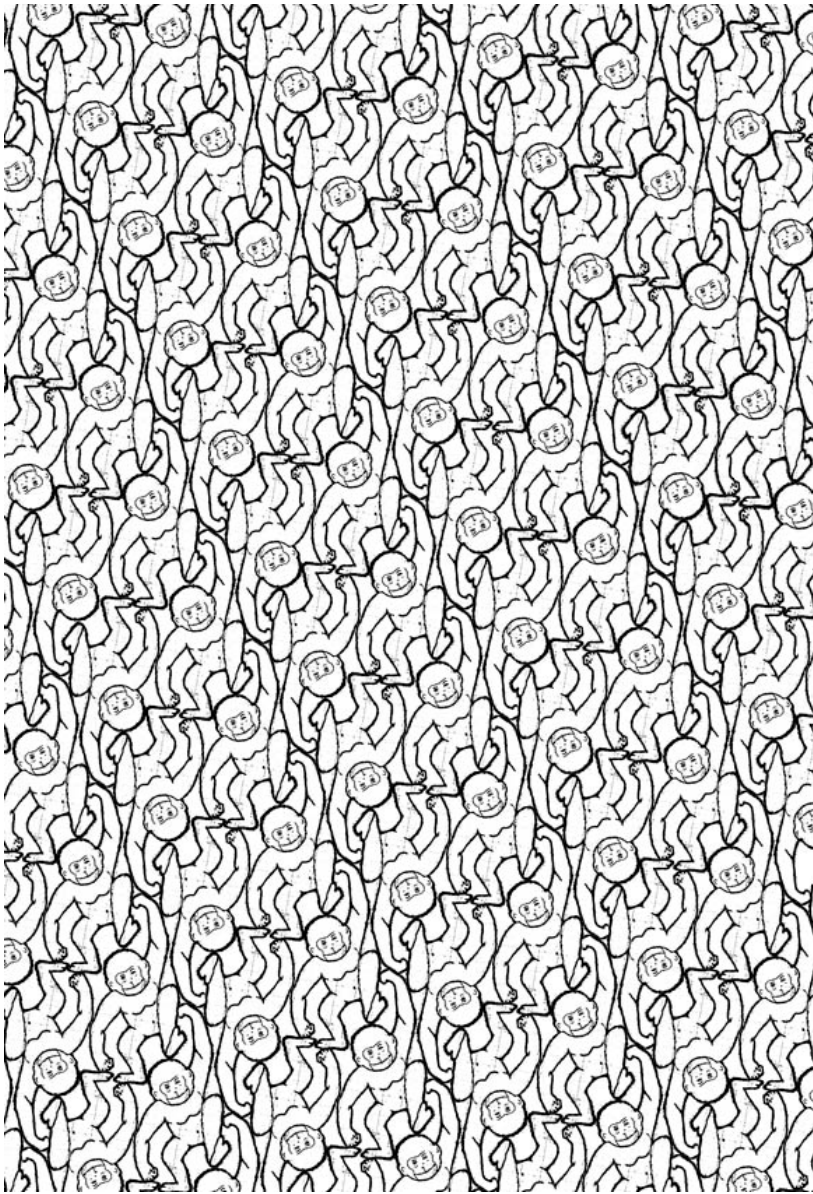


E. Chevalier



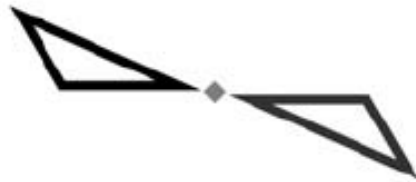
E. Chevalier



E. Chevalier



translation



rotation



reflection



glide-reflection

Key:

- translation axis
- ◆ two-fold rotation
- reflection axis
- - - glide-reflection axis



translation



rotation



**NEW  
MAN**

Logo New Man créé par Raymond Loewy en 1969



Ambigramme: figure graphique d'un mot dont la représentation suscite une double lecture





Jacob Dahlgren, Endless Cut, 2011

42

~~42~~

42

~~42~~

42

42

4242  
~~4242~~  
4242

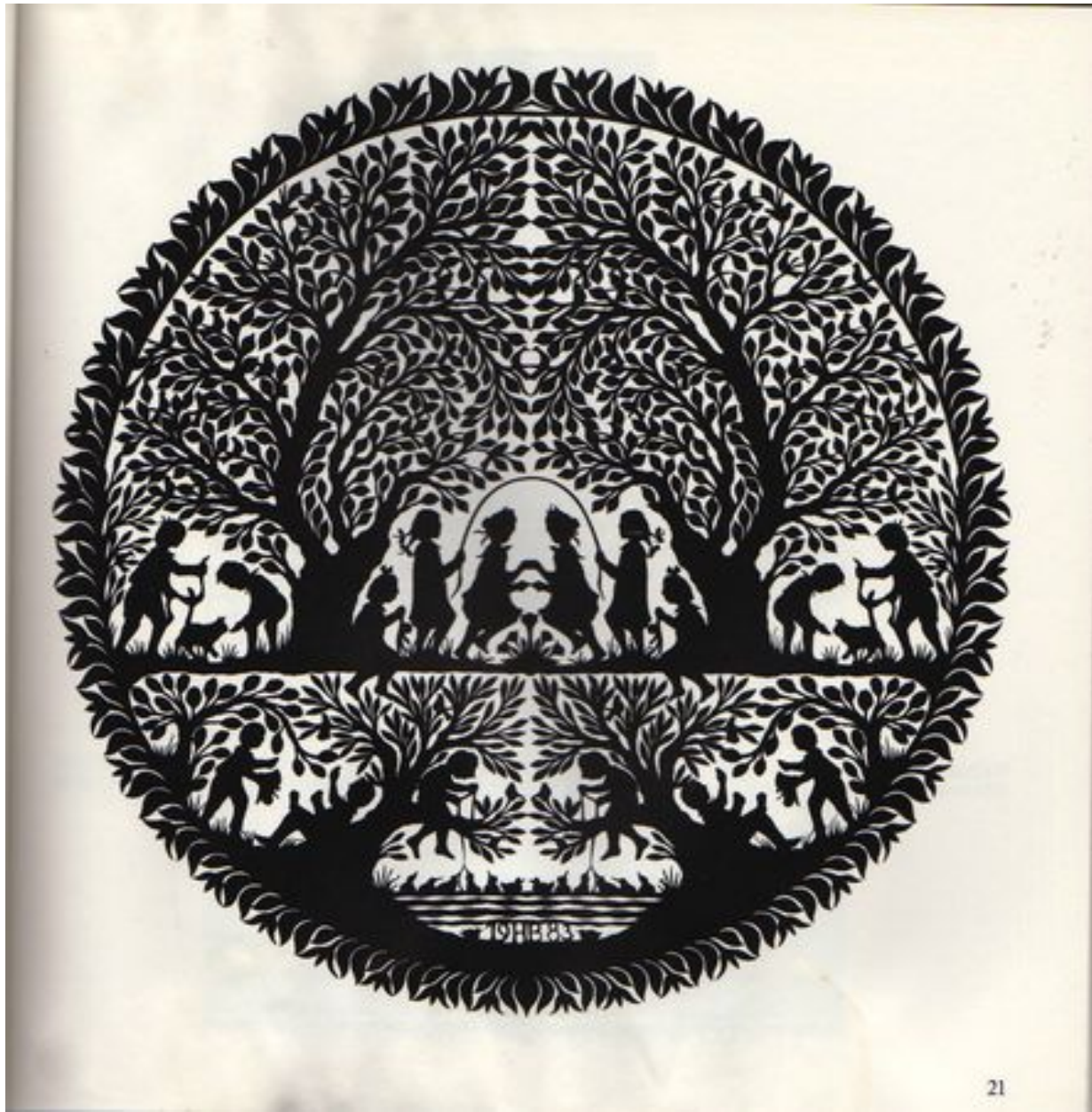
~~42~~



Alex John Beck

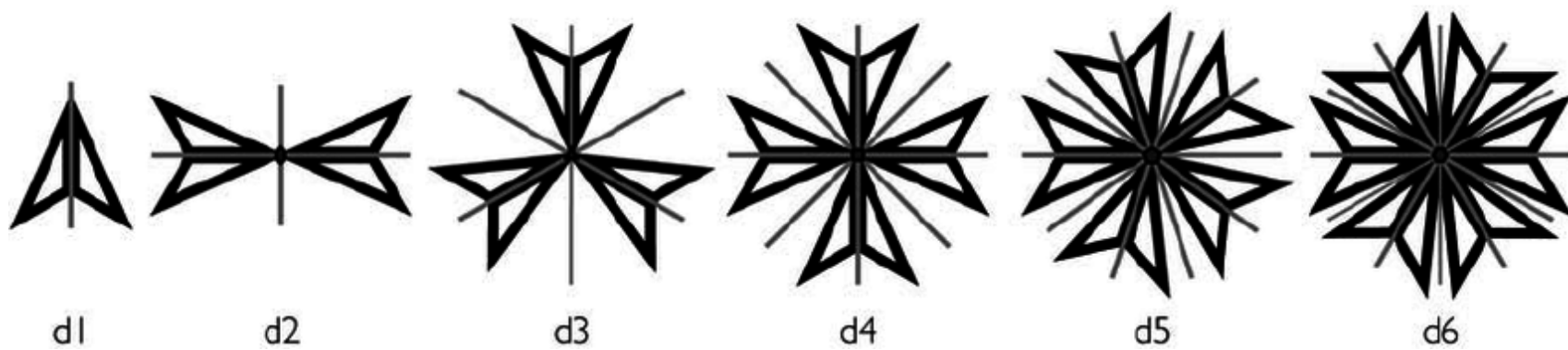
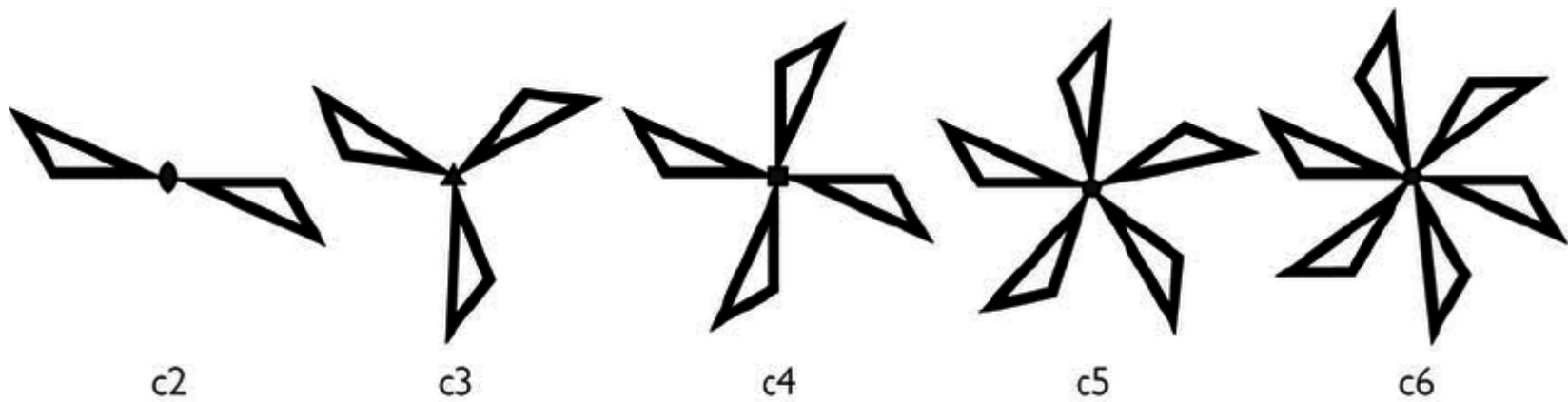


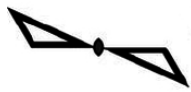
reflection









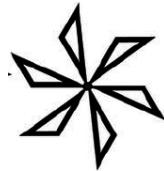


c2



d1





c6



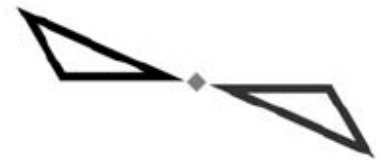
M.Cattelan. 1996



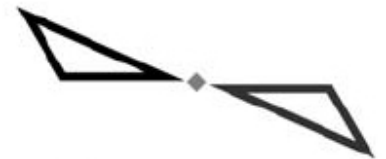
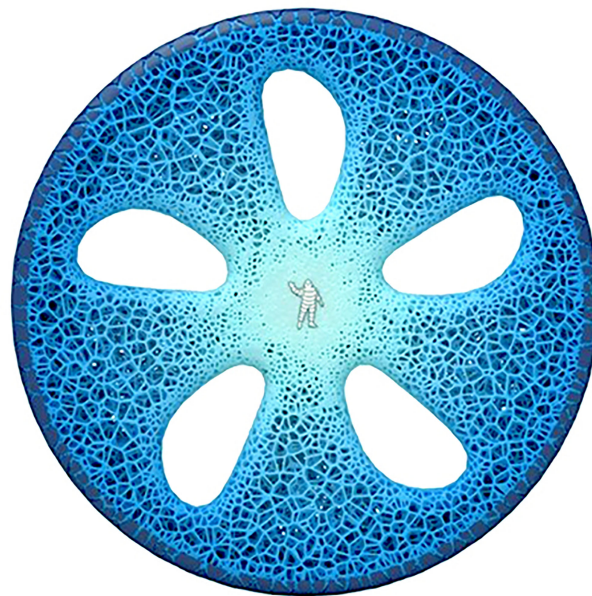
d5



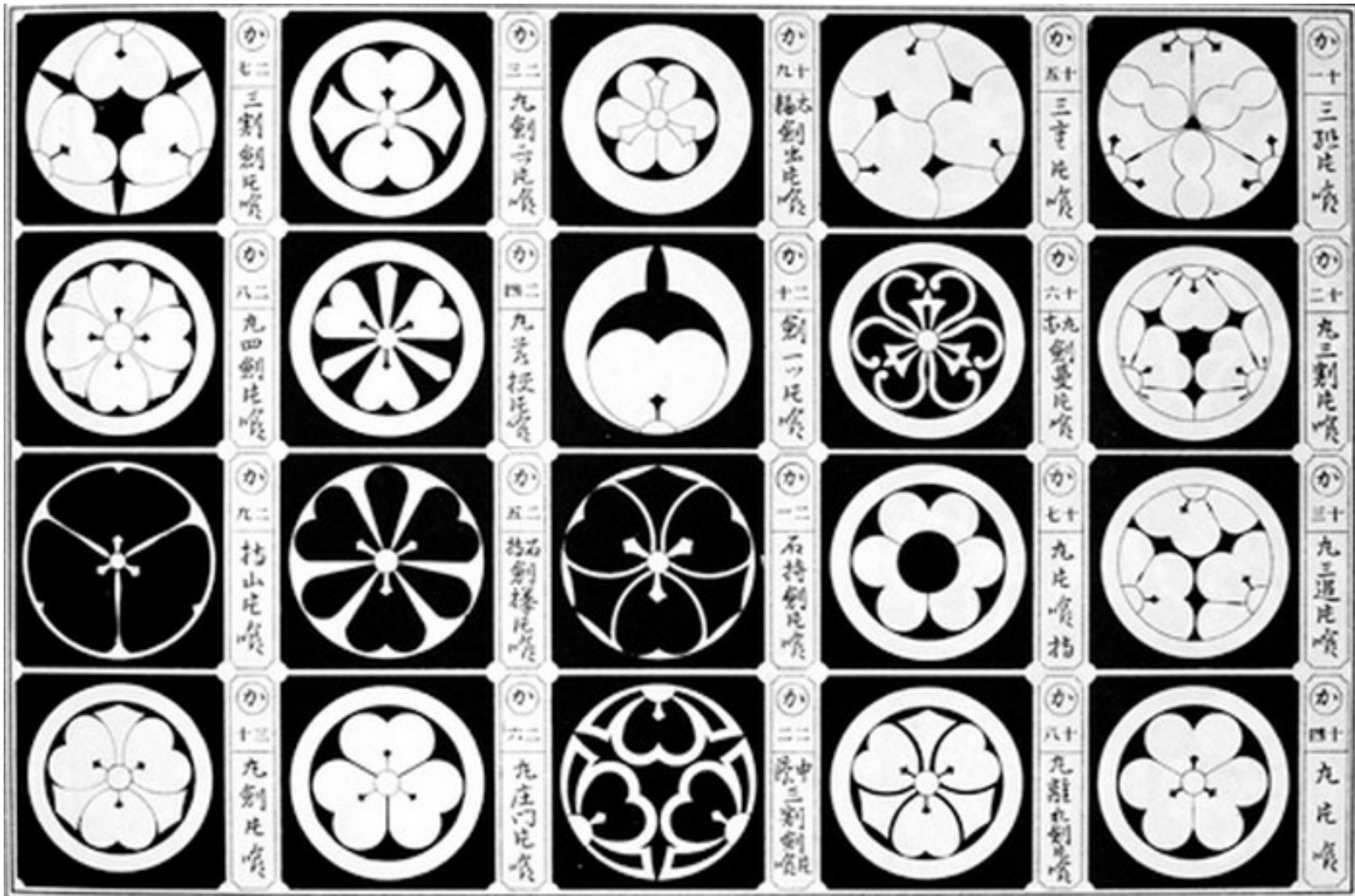
reflection



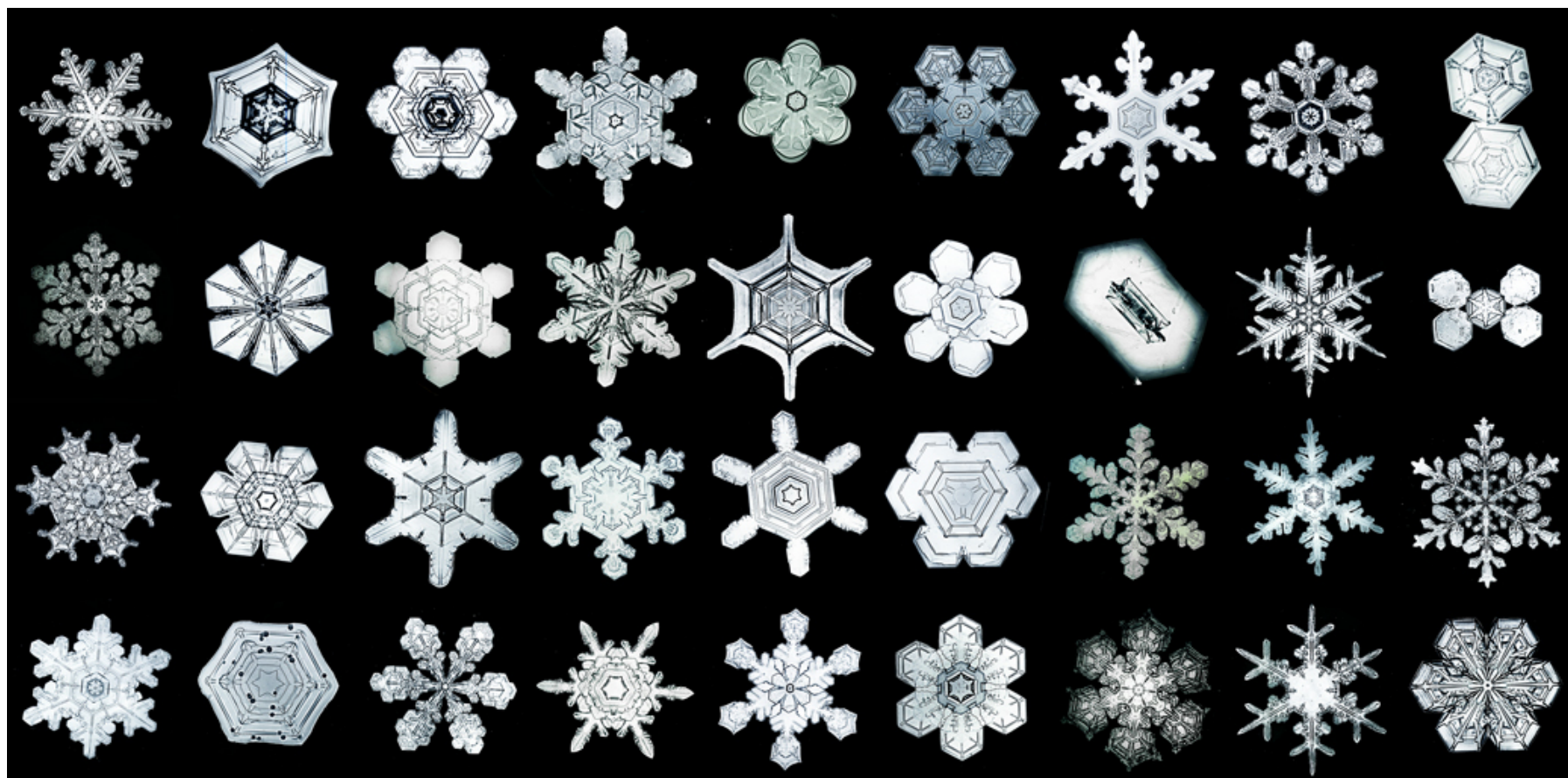
rotation

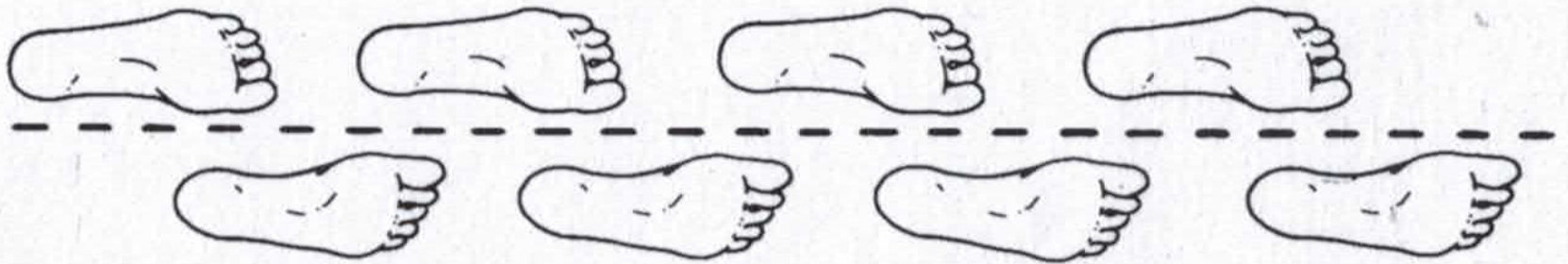


rotation



Kamon, Japon





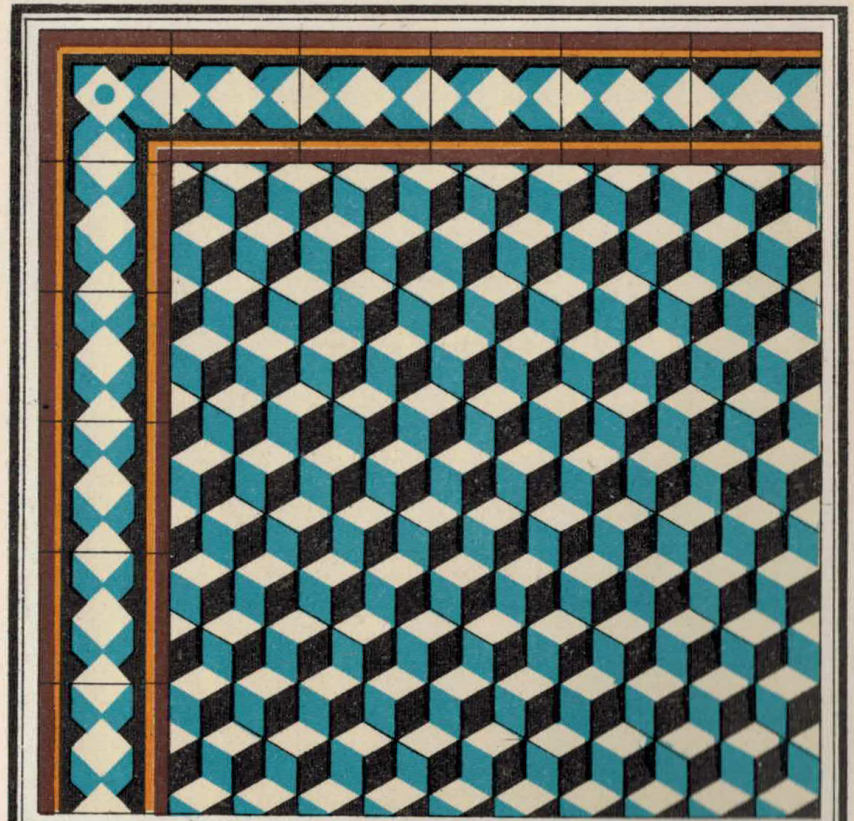
glide-reflection





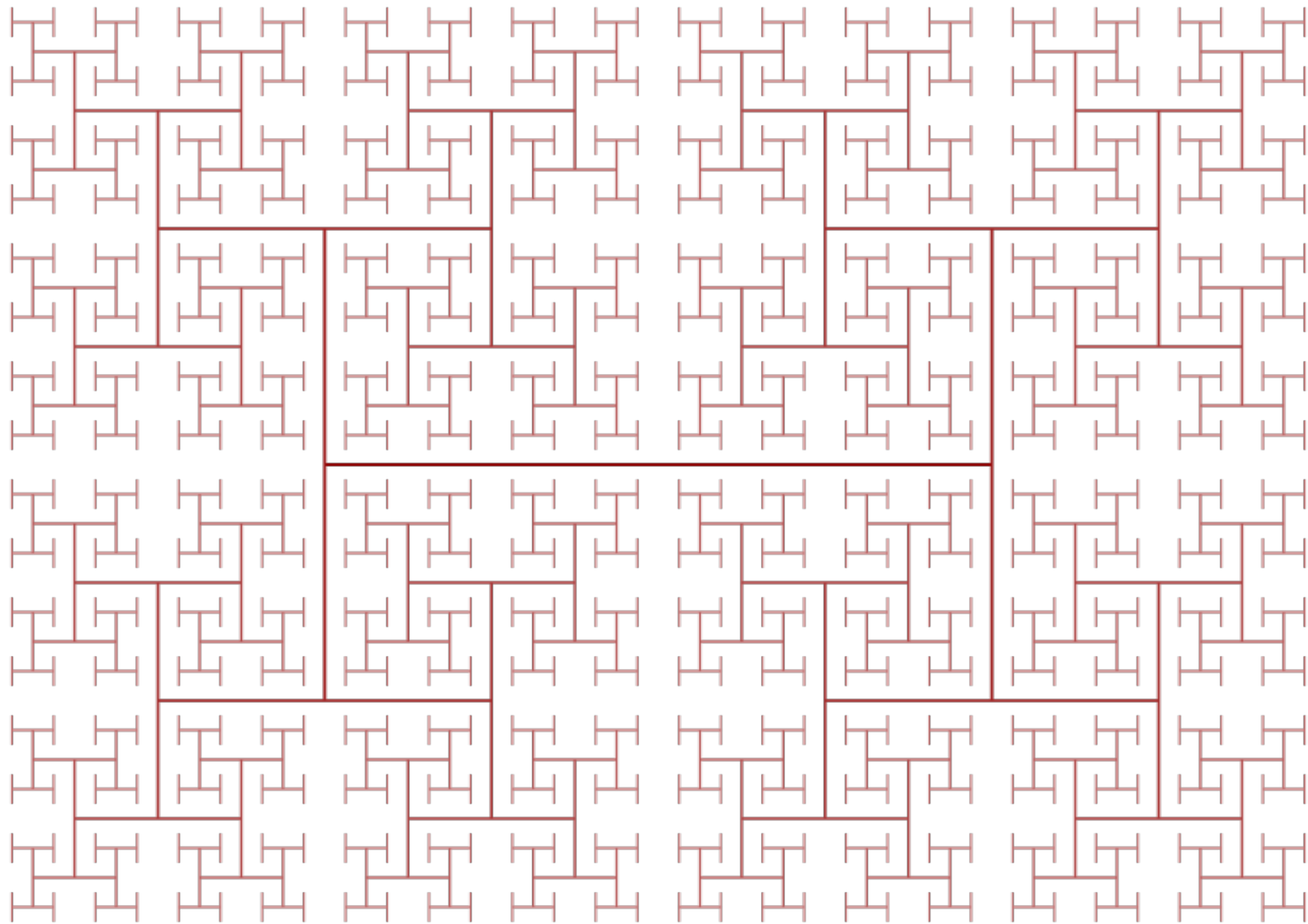
Bordure N° 40

Fond N° 8<sup>a</sup> octogone



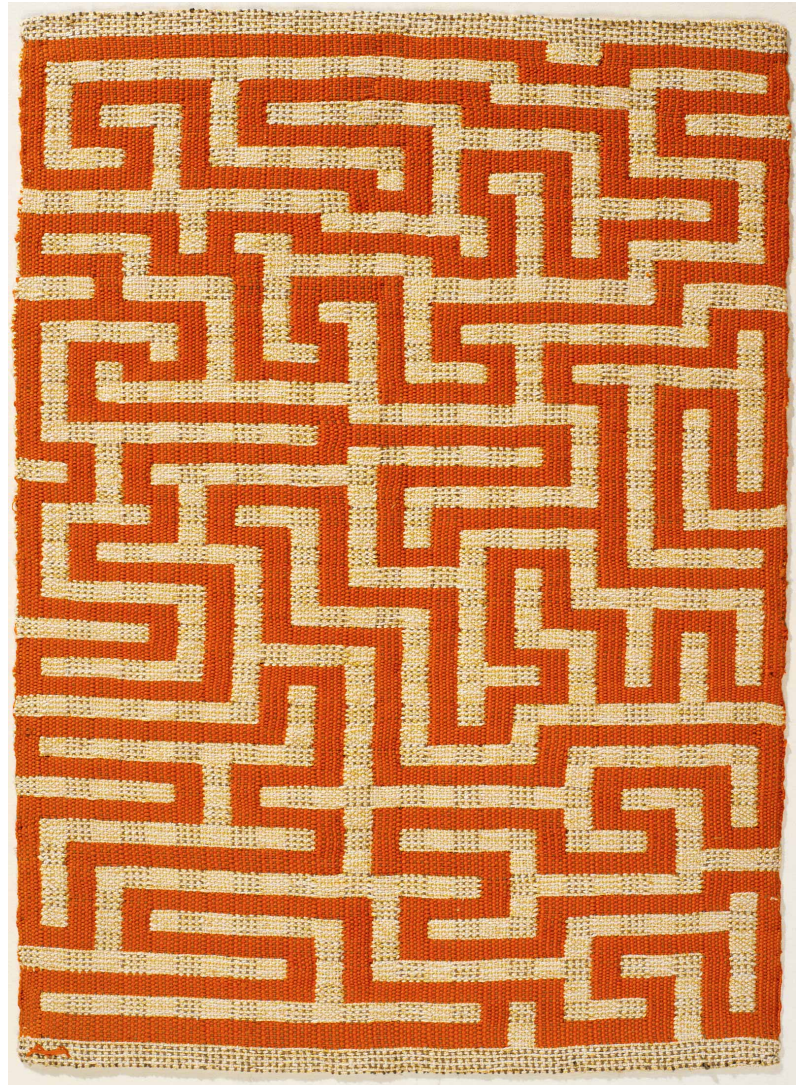
Bord. N° 19<sup>a</sup>

Fond N° 9



H tree, modèle fractal

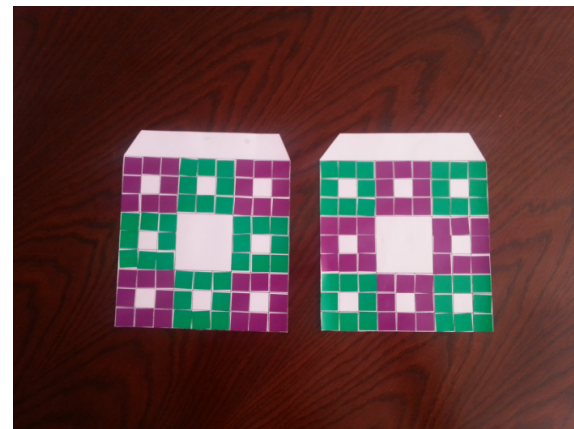


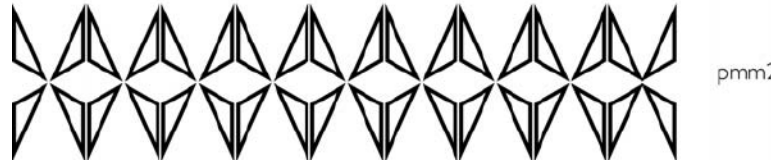
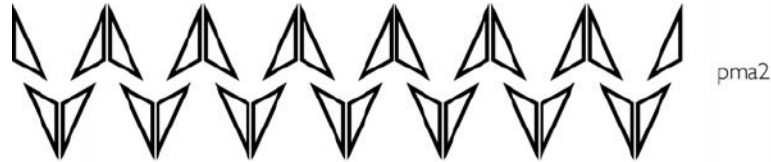
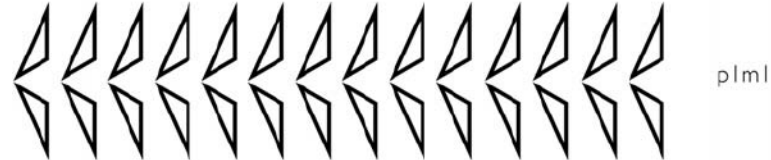


Anni Albers, Red Meander, 1954, lin & coton, 50 x 60 cm



Waclaw Sierpinski carpet project  
(mathématicien, 1916)







p111





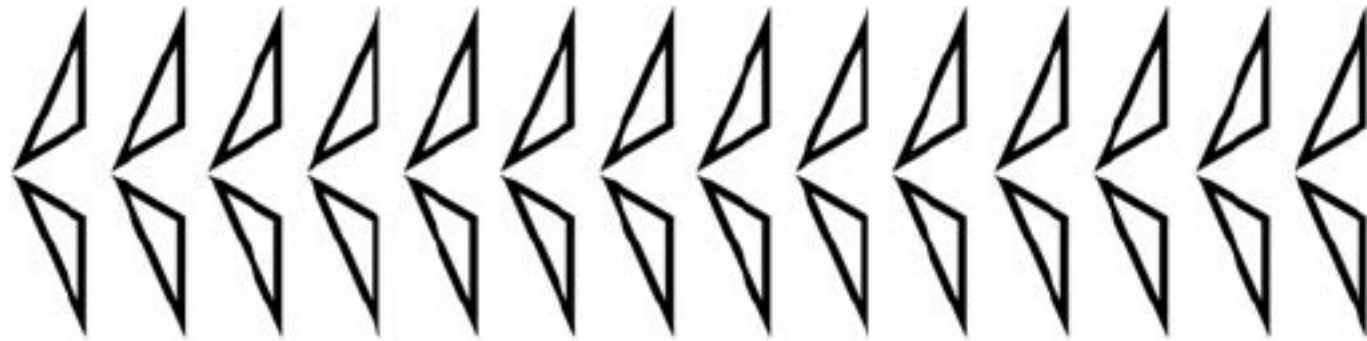
plal





pml l



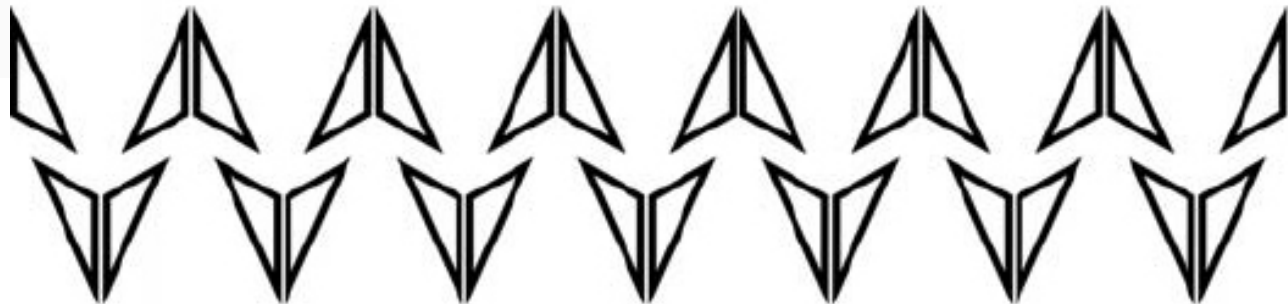


plml

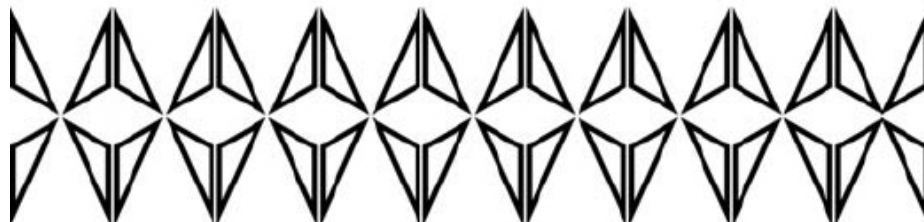








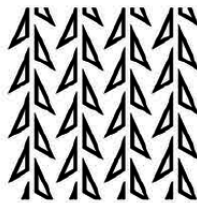
pma2



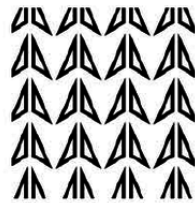
pmm2



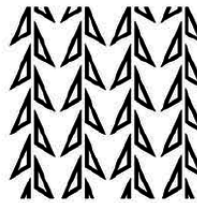
p1



pg



pm



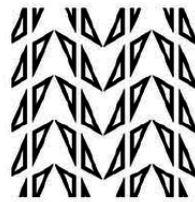
cm



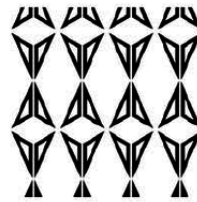
p2



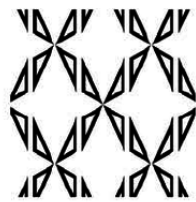
pgg



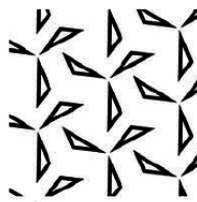
pmg



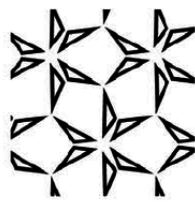
pmm



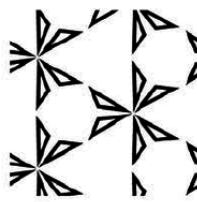
cmm



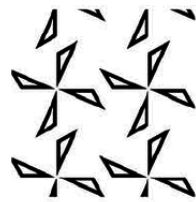
p3



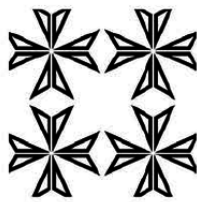
p31m



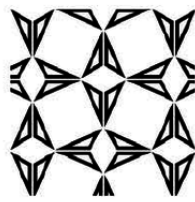
p3m1



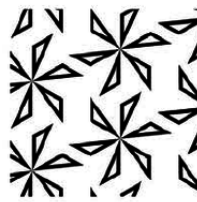
p4



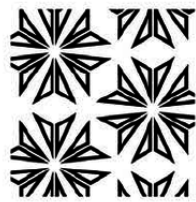
p4mm



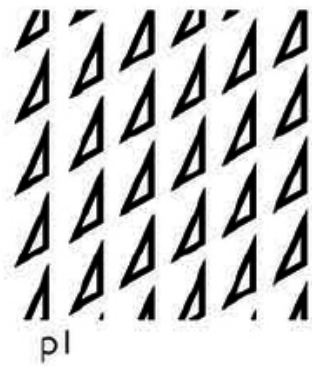
p4gm



p6

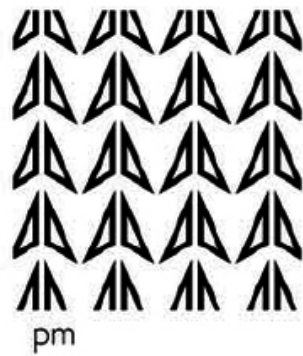


p6mm



PI





x (91)



100/100/100

Brun IX-53

System  $\text{IV}^B$   
 $\text{IV}^B$

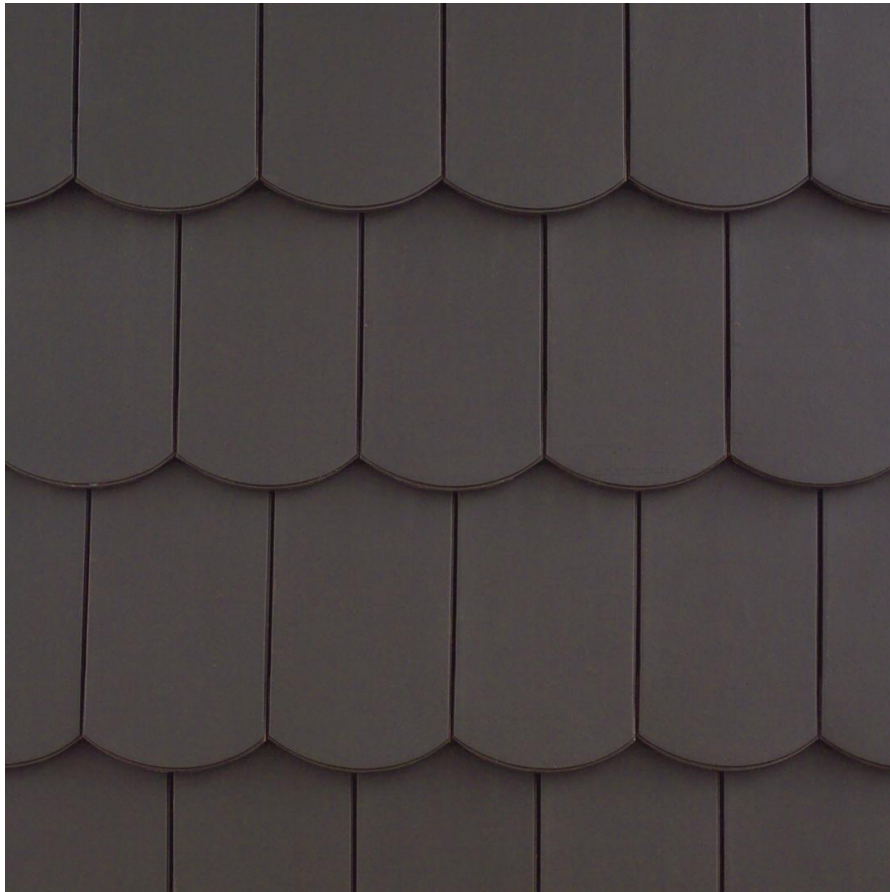
mattele op 130 mm hoog  
 elke 82 mm breed  
 breed in beide richt. van beide afwissel.

M.C. Escher



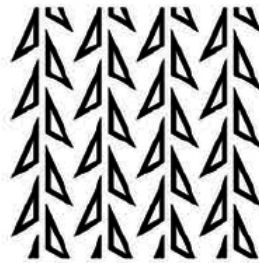
cm

MC Escher

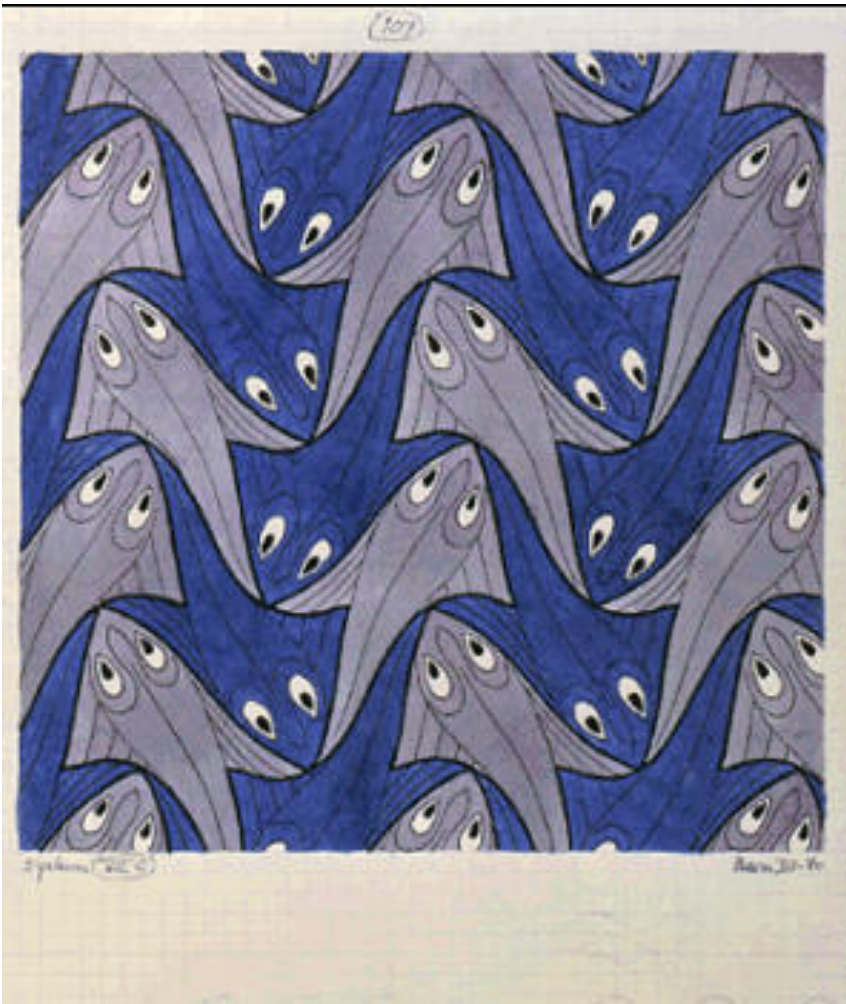
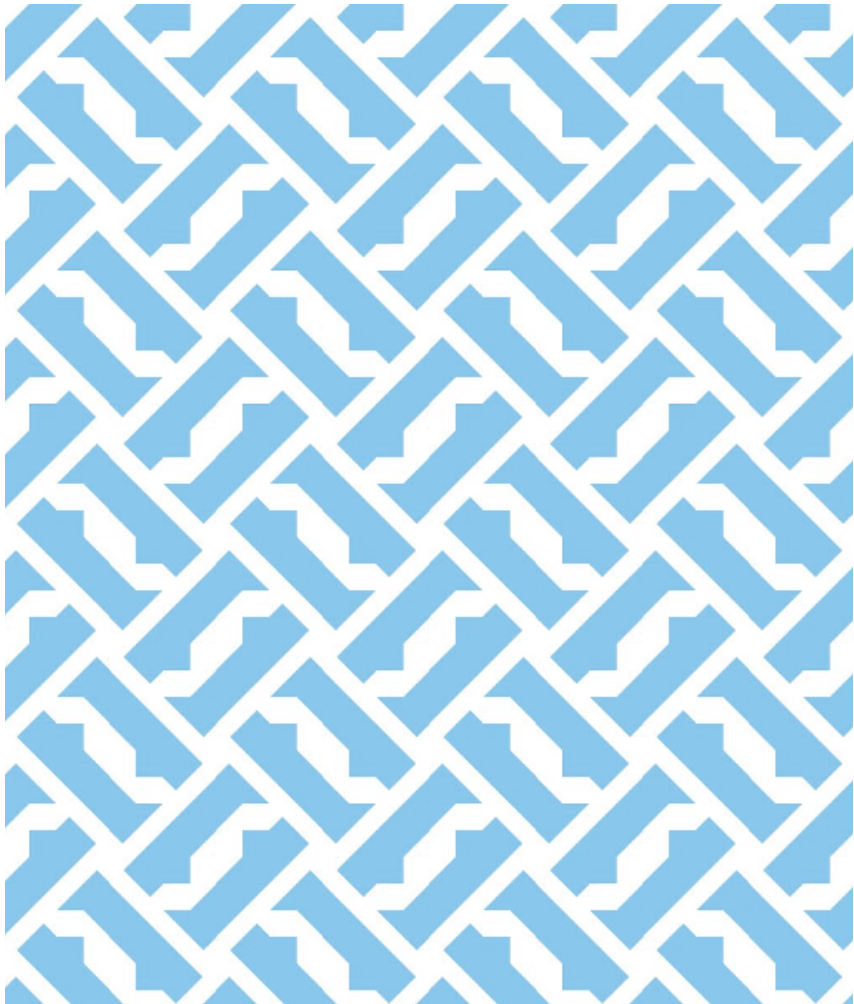


cm

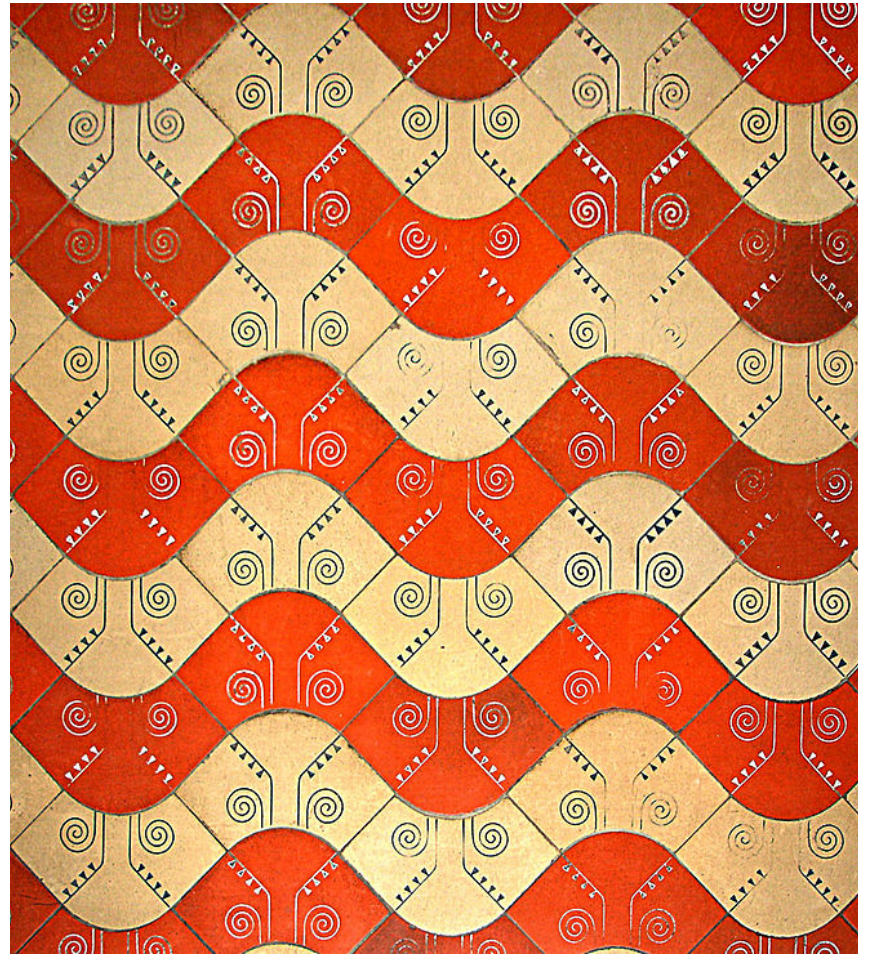




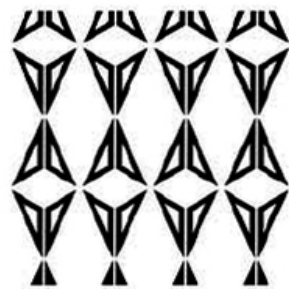
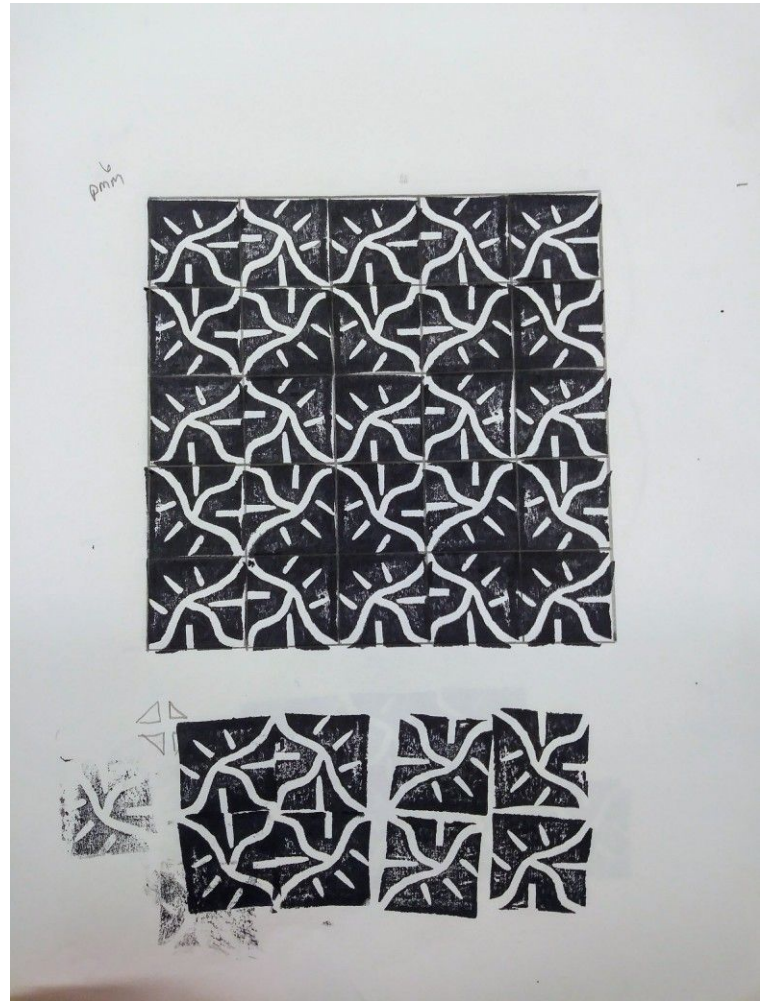




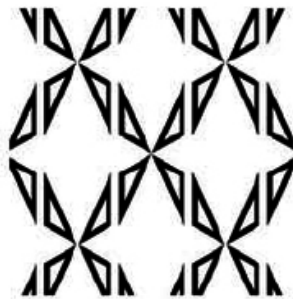
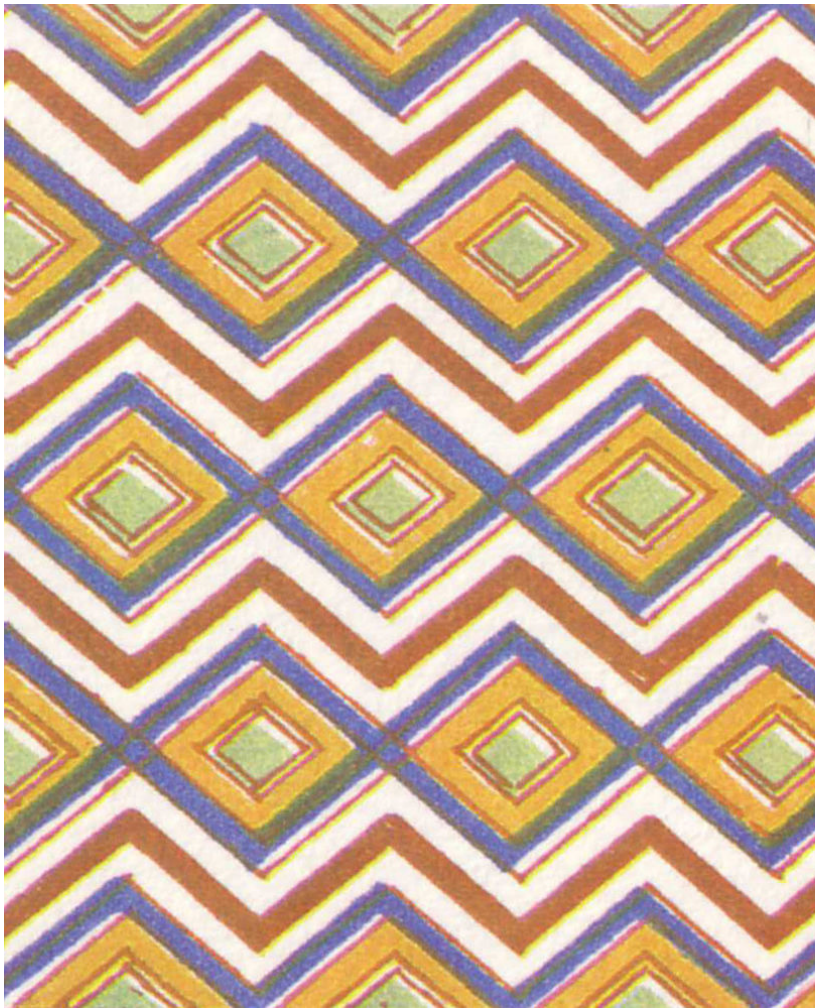
pgg



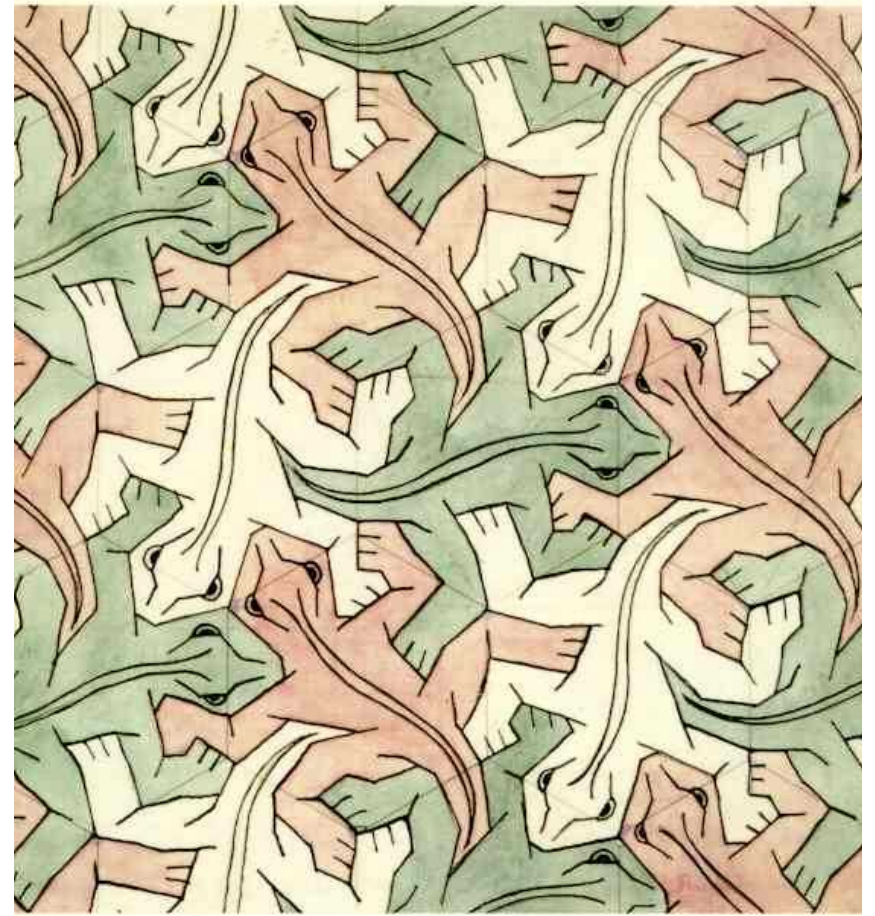
pmg



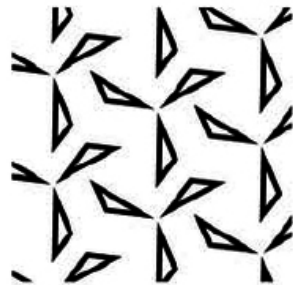
pmm



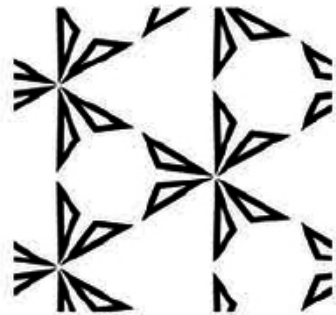
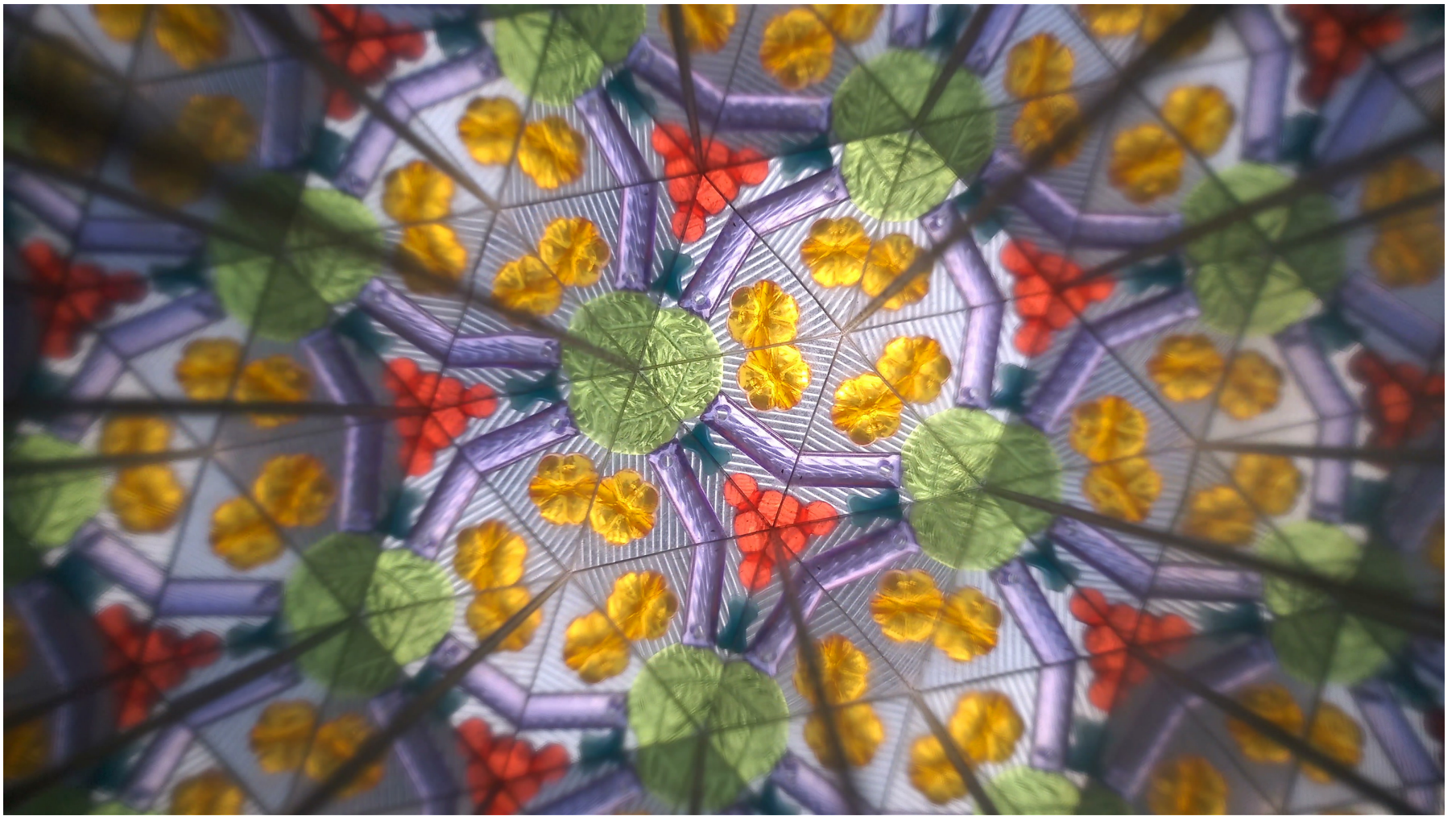
cmm



MC Escher

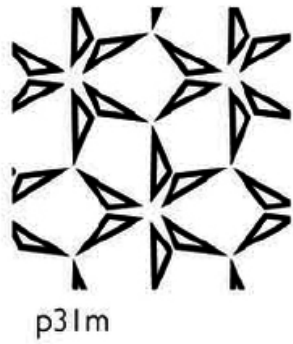


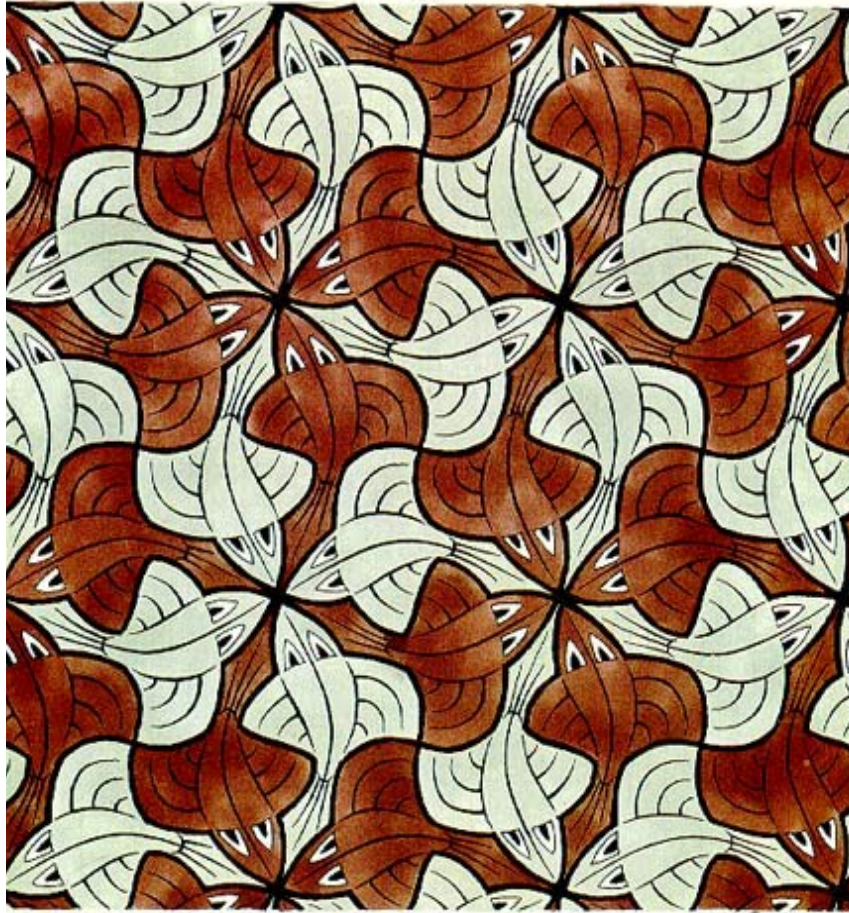
p3



p3m1

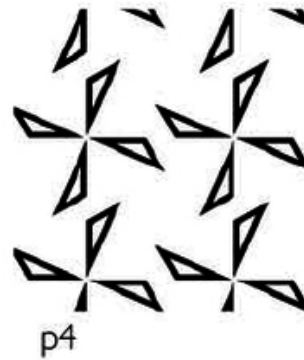


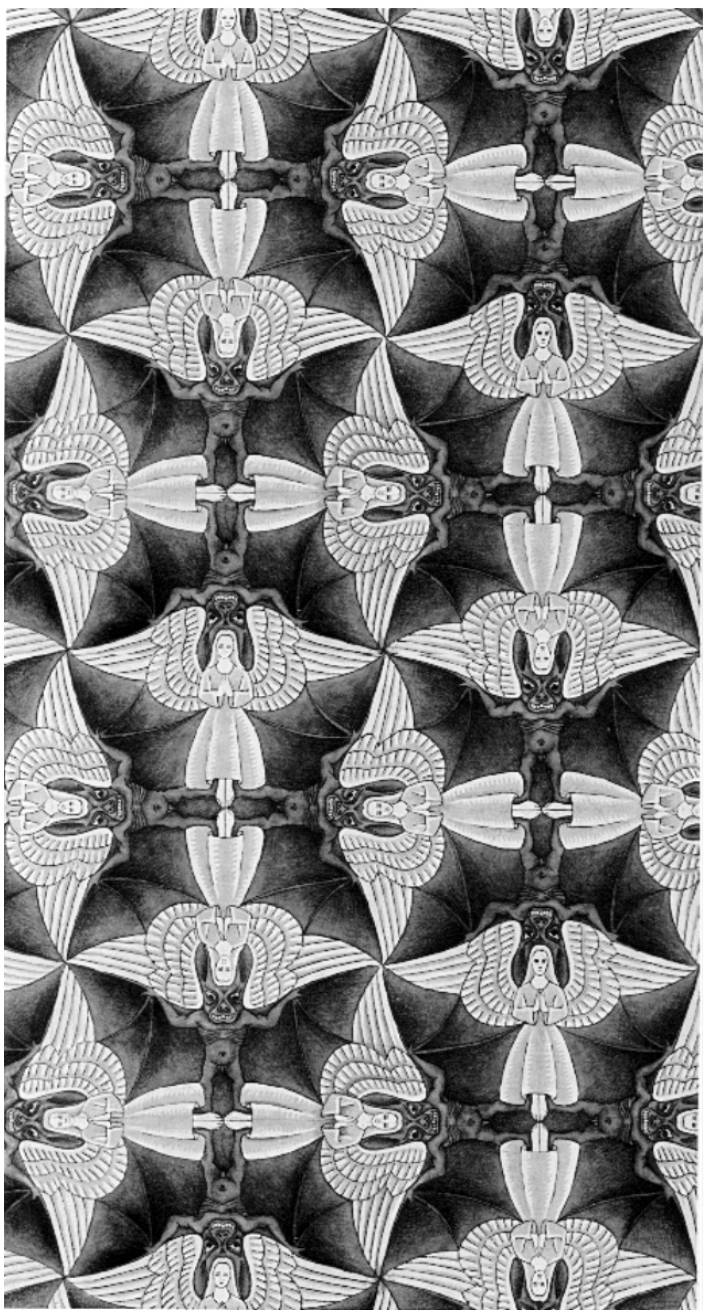




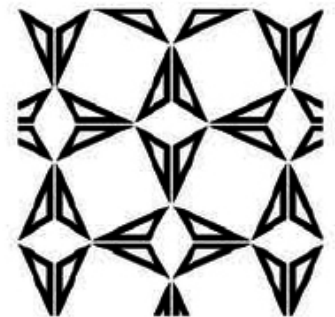
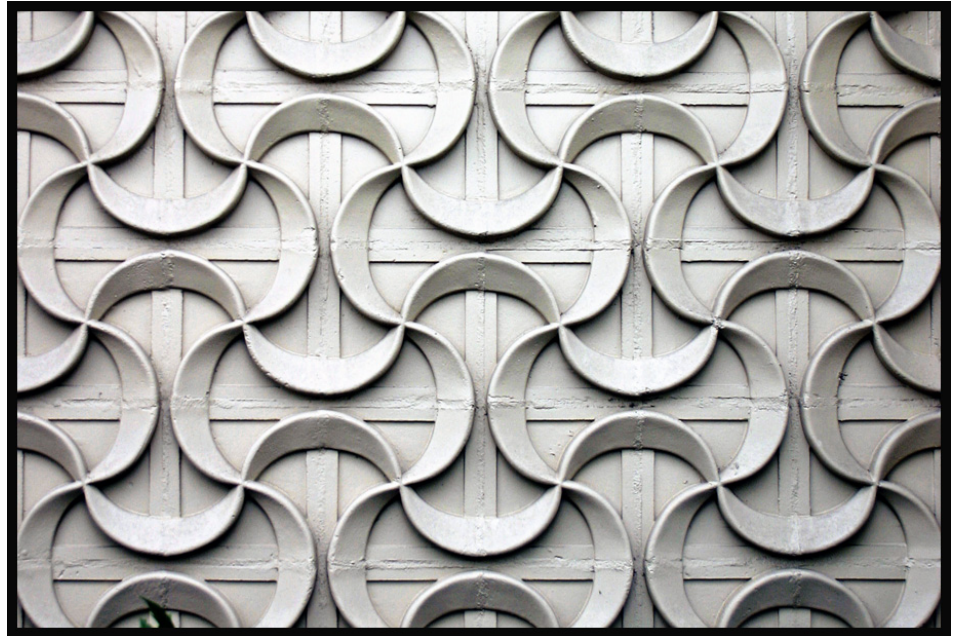
M.C. Escher

MC Escher





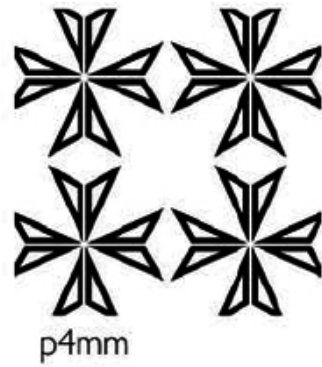
MC Escher

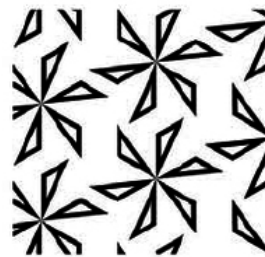


p4gm

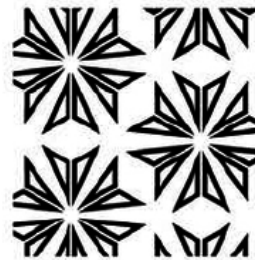
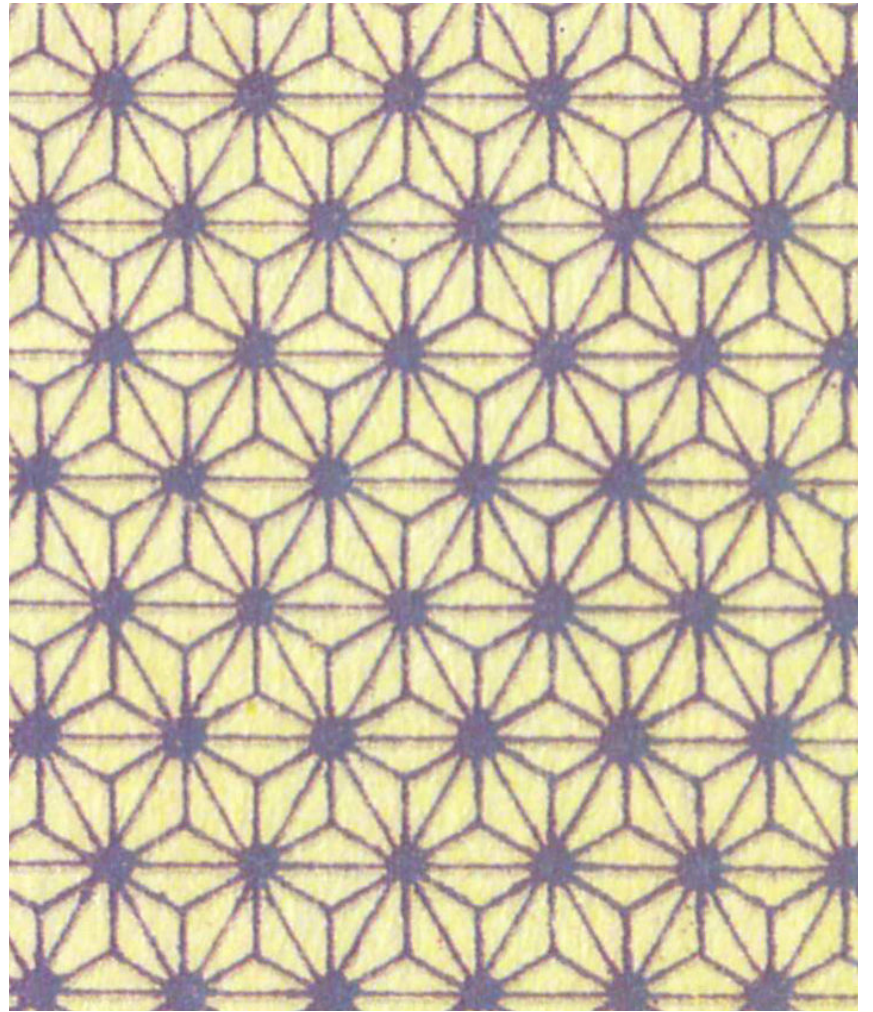
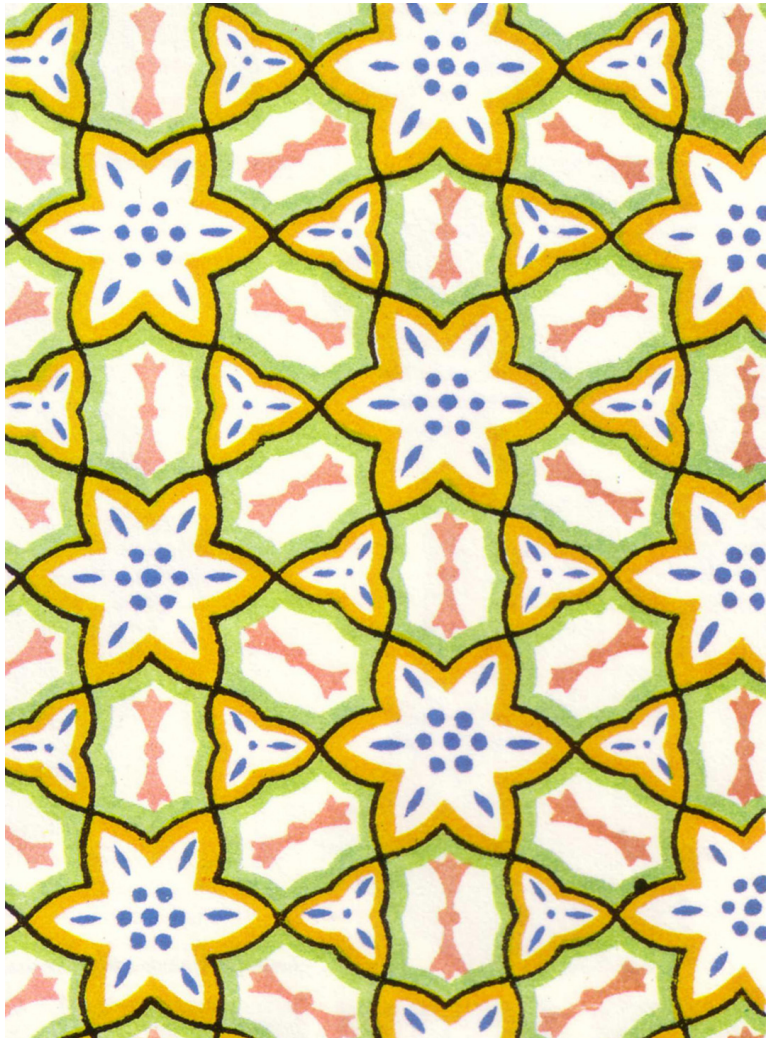


awase-nui-shibori





p6



ρ6mm